

Operating Manual  
**DELTA SV1B and SVS1FB**  
Modulating - Butterfly Valve  
with Top Control TC 8630



Read and understand this manual prior to operating or servicing this product.





## **Declaration of Conformity for Valves and Valve Manifolds**

APV Rosista GmbH, Zechenstr. 49, D-59425 Unna-Königsborn  
as manufacturer with sole responsibility declares that the

**double seat valves of the series D2, SD4, SDT4, SDM4, SWcip4, DSV,  
DA3, DE3, DEU3, DET3, DKR2, DKRT2, DKRH2**  
in the nominal diameters DN 25 - 150, 1" - 6" and 1 Sh5 - 6 Sh5

**butterfly valves of the series SV1 and SVS 1 F**  
in the nominal diameters DN 25 - 100, DN 125 - 250 and 1" - 4"

**ball cocks of the series KH, KHV**  
in the nominal diameters DN 15 - 100

**single seat, diaphragm and spring loaded valves of the series  
S2, SW4, SWmini4, SWT4, M3, MF3, M4, MF4, MP4, MS4, AP1, APT1, CPV, RG4,  
RGM4, RGE4, RGEM4, PR2, PR3, PR4, SI2, UF3, VRA, VRAH**  
in the nominal diameters DN 10 - 150, 1/2" - 4" and 1 Sh5 - 6 Sh5


and the valve manifolds installed thereof

meet the requirements of the Directives 89/392/EEC (amendment 93/44/EEC),  
replaced by 98/37/EC and GSG - 9.GSGV.

For official inspections, APV Rosista GmbH presents  
a technical documentation according to appendix V of the Machinery Directive,  
this documentation consisting of documents of the development and construction,  
description of measures taken to meet the conformity and to correspond with  
the basic requirements on safety and health, incl. an analysis of the remaining risks  
as well as an operating manual with safety instructions.

The conformity of the valves and valve manifolds is guaranteed.

D-59425 Unna-Königsborn, June 04, 2008  
APV Rosista GmbH

  
-----  
Manager Research and Development



<b>Table of Contents :</b>	<b>Page:</b>
<b>1. General Terms</b>	<b>2</b>
<b>2. Safety Instructions</b>	<b>2</b>
<b>3. Mode of Operation</b>	<b>3</b>
<b>4. Positioner TC 8630</b>	<b>4</b>
<b>5. Installation</b>	<b>4 - 5</b>
5.1 Welding Instructions	
<b>6. Dimensions / Weights</b>	<b>6</b>
<b>7. Technical Data</b>	<b>7</b>
<b>8. Materials</b>	<b>7</b>
<b>9. Maintenance</b>	<b>8</b>
<b>10. Service Instructions SV1B</b>	<b>9 - 10</b>
10.1 Disassembly from the line system	
10.1.1 Disassembly of the valve SV1B	
10.1.2 Replacement of seals	
10.1.3 Installation of the inner parts	
10.1.4 Assembly of the valve	
<b>11. Service Instructions SVS1FB</b>	<b>11 - 12</b>
11.1 Disassembly from the line system	
11.1.1 Disassembly of the valve SVS1FB	
11.1.2 Replacement of seals	
11.1.3 Installation of the inner parts	
11.1.4 Assembly of the valve	
<b>12. Spare parts lists</b>	<b>13</b>
(see appendix)	
SV1B - NC - NO DN 25 - 100	- RN 01.037553
SV1B - NC - NO 1" - 4" Inch	- RN 01.037553-1
SVS1FB - NC - NO DN 25 - 100	- RN 01.037554
SVS1FB - NC - NO 1" - 4" Inch	- RN 01.037554-1
Actuator S/A for feedback unit	- RN 01.076



---

## 1. General Terms

---

This operating manual has to be read carefully and observed by the competent operating and maintenance personnel.

We do not accept any liability for damage or malfunctions resulting from the non-compliance of this operating manual.

Descriptions and data given herein are subject to technical changes.

---

## 2. Safety Instructions

---



### **DANGER!**

- The technical safety symbol draws your attention to important directions of operating safety. You will find it wherever the activities described are bearing risks of personal injury.
- Disconnect electric and pneumatic connections
- Depressurize the line and cleaning system and discharge the lines, if possible, before any maintenance work.
- Do not reach for the open valve or yoke!  
Risk of bruising at movable parts.
- Risk of injury by sudden valve operation in dismantled valve state!
- Observe Service Instructions to ensure safe maintenance of the valve.
- **Danger!**  
Welded actuators are preloaded by spring force.



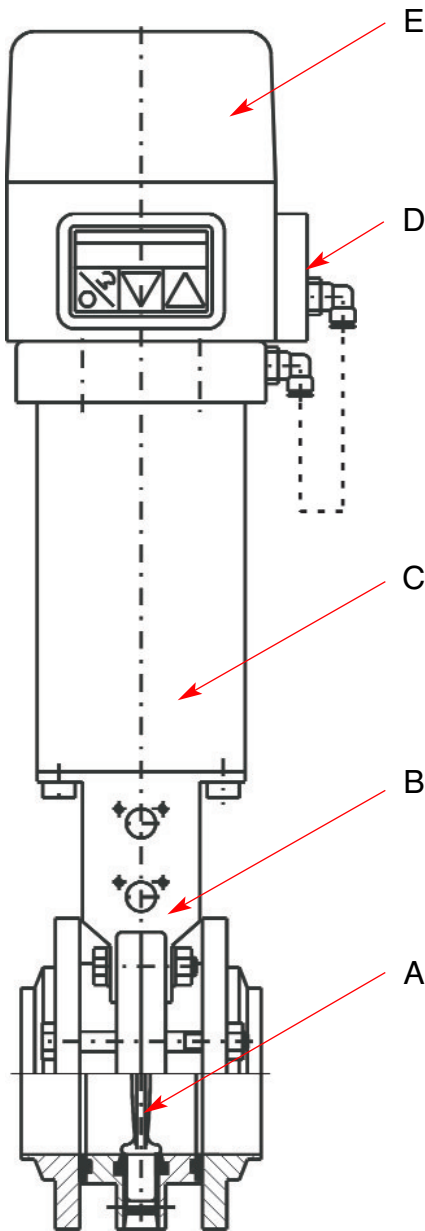
**Opening of the actuators is strictly forbidden.  
Danger to life!**

Actuators which are no longer used and / or defective must be disposed in professional manner.

Defective actuators must be returned to your APV Solutions & Services company for their professional disposal and free of charge for you.

Please address to your local APV representative.

### 3. Mode of operation



Use of high-quality stainless steel and seal materials to the specified requirements, the butterfly valve range DELTA SV1B and SVS1FB is applicable in the food and beverage industries as well as in the pharmaceutical and chemical industries.

The function of the butterfly valve with positioner is to shut off line sections and to control flow quantities in line sections.

The modulating butterfly valves of the ranges DELTA SV1B and SVS1FB are controlled by a positioner TC 8630 (company Bürkert).

For the positioner a separate operating manual (see chapter 4.) is available.

The positioner **(E)** provides for the specified allocation of the valve position and input signal. It compares the input signal (4-20 mA) from the modulating device with the turning position of the valve and emits the output signal, i.e. the pneumatic set pressure to the turning actuator **(C)**.

Depending on the requirements, the modulating valve can be operated normally closed (air-to-raise, spring-to-lower) or normally open (air-to-lower, spring-to-raise).

**NC** - The turning actuator opens with set pressure and closes with spring pressure.

**NO** - The turning actuator closes with set pressure and opens with spring pressure.

The valve position can be monitored through an indicator in the coupling area **(B)**.

Reset by spring force.

The connections for the electric and pneumatic supply are located laterally at the positioner **(D)**.

Cleaning of the product-wetted valve surface is performed during cleaning of the pipeline.

The valves can also be used in vacuum systems.



---

## 4. Positioner TC

---

### 4.1 Positioner Top Control 8630

For the positioner a separate operating manual is available.

More detailed information:

[www.buerkert.de](http://www.buerkert.de)

> products > process and control valves > positioner > TC8630



---

## 5. Installation

---

In normal installation position, the actuator is positioned vertically to the top. Depending on the respective application, optional installation positions can, however, also be realized.

DELTA SVS1FB – valves are provided for assembly between FG1 flanges.

DELTA SV1B – valves with weld ends are welded directly into the product line.

Separate dismantling by a flange connection, etc. in the continuing pipeline should be provided.

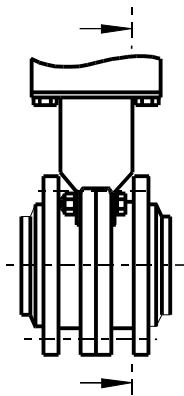
**Attention:** Observe welding instructions.

## 5. Installation

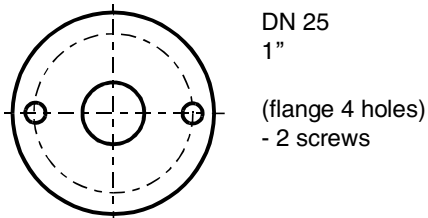
### 5.1 Welding Instructions



- Observe the bore position during welding of the mating flanges of the DELTA SVS1FB valve. (see fig. and table)



DN	inch	$a^\circ$
25	1"	18°
40	1,5"	18°
50	2"	16°
65	2,5"	14°
	3"	13°
80, 100	4"	45°



- Welding may only be carried out by certified welders (EN287-1). (seam quality EN 25817 "B")

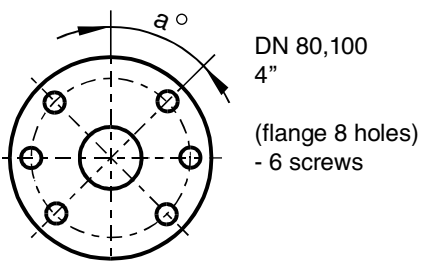
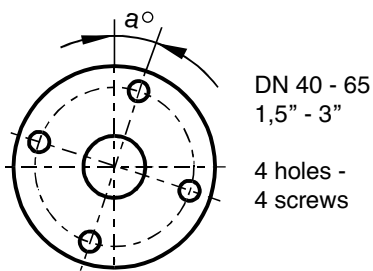
- The welding of the mating flanges must be effected in such a way that deformation strain cannot occur.

- TIG orbital welding is the most appropriate method.

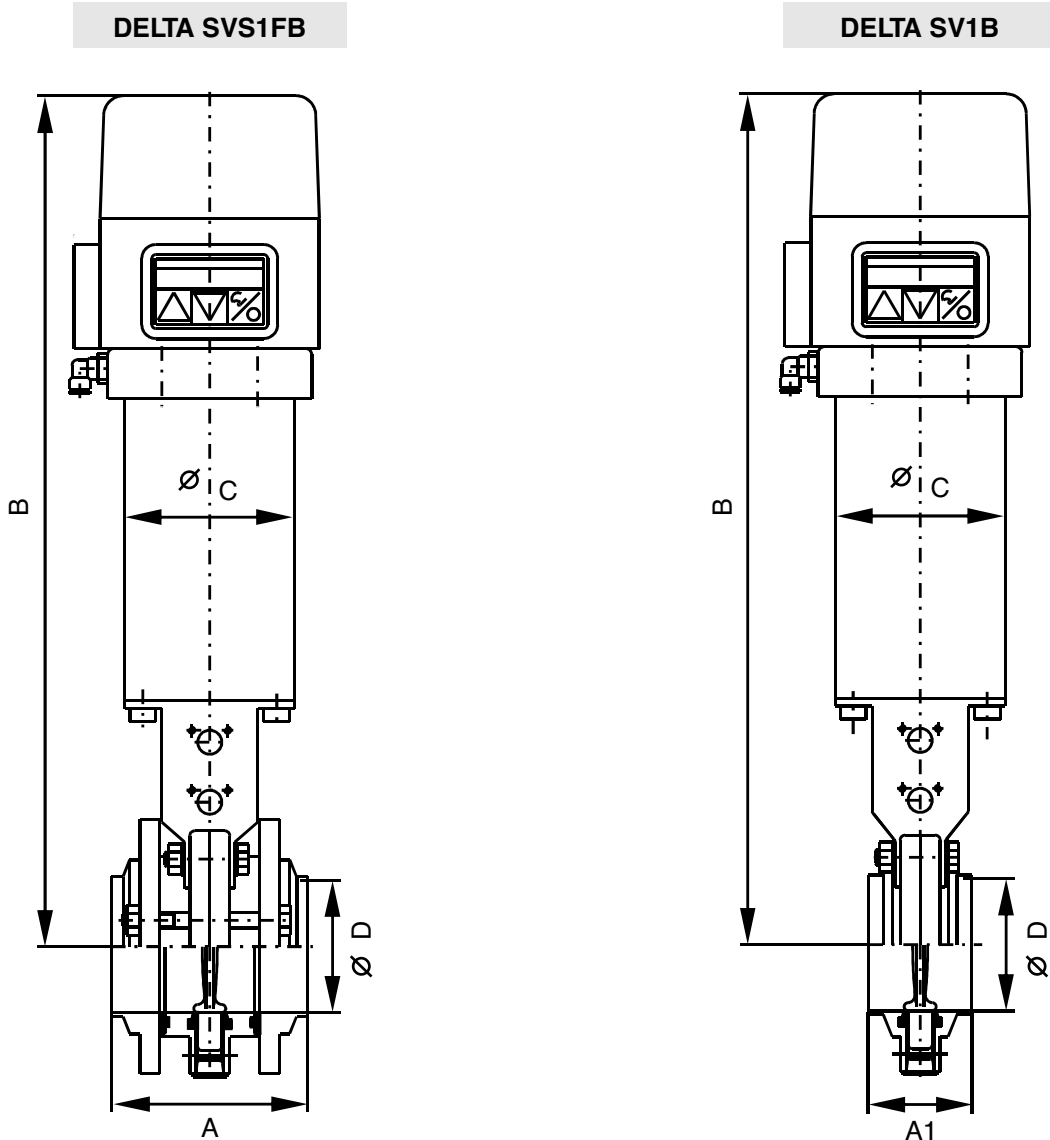
- Before welding, all sensitive parts must be removed! Dismantle the valve core with seals between the mating flanges.

- After welding of the mating flanges and after work at the pipelines, the corresponding parts of the installation or pipelines must be cleaned from welding residues and soiling. If these cleaning instructions are not observed, welding residues and dirt particles can settle in the valve and cause damage or be carried over to other parts of the installation.

- Any damage resulting from the non-observance of these welding instructions is not subject of our guarantee.



## 6. Dimensions / Weights



dimensions in mm

DN	A	A1	B	ØC	ØD
25	98	52	420	85	26
40	98	52	429	85	38
50	98	52	435	85	50
65	98	52	443	85	66
80	98	52	450,5	85	81
100	98	52	460,5	85	100
inch					
1"	98	52	418	85	22,6
1,5"	98	52	427	85	34,8
2"	98	52	433	85	47,8
2,5"	98	52	440	85	60,3
3"	98	52	450,5	85	72,9
4"	98	52	458,5	85	97,6

weights in Kg

DN	inch	DELTA SVS1FB	DELTA SV1B
25	1"	5,0	4,0
40	1,5"	5,7	4,4
50	2"	6,4	4,5
65	2,5"	7,0	4,8
80	3"	7,4	5,1
100	4"	8,8	6,1

## 7. Technical Data

kvs values in m <sup>3</sup> /h	
DN	
25	40
40	86
50	160
65	250
80	440
100	630

- Valve:**
- max. line pressure : **10 bar**
  - max. operating temperature : **135° C EPDM, HNBR**  
: **\* VMQ, \* FPM**
  - short-term load : **140° C EPDM, HNBR**  
: **\* VMQ, \* FPM**  
: **\* (no steam)**
  - vacuum tightness : **2 mbar**
  - opening angle of butterfly valves : **0° - 90°**  
min. air pressure for actuator : **6 bar**  
max. air pressure for actuator : **7 bar**
  - pneumatic air connection (for hose) : **6 x 1 etc. 1/4" OD**

**(use dry and clean pneumatic air, only)**

- positioner:**
- input signal : **4.....20mA**
  - protection class : **IP765**

## 8. Materials

- valve:**
- valve disc : **1.4571 / 1.4404**
  - housing flange, mating flange : **1.4404**  
DN 25 - 100 / inch 1" - 4"
  - SV seal, flange seal : **EPDM**  
standard:  
option: **HNBR, VMQ, FPM**
  - bearings: **Polyamide PA 12**

- actuator:**
- yoke, actuator : **1.4301**
  - coupling : **1.4308**
  - indicator : **PE - solid**
  - piston : **Polyacetal POM**
  - spindle bearing : **Polyamide PA 12**
  - air connection : **Polyamide PA 6.6**
  - adapter : **Polyamide PA 6 black**

- positioner:**
- housing : **PPE / PA**
  - cover : **PSU (clear-transparent )**
  - seals : **NBR**

## 9. Maintenance

- The maintenance intervals depend on the application of the valve and should be determined by the operator carrying out regular checks of the valve.
- There are a few wear parts on butterfly valves, principally the SV seal, flange seals and bearings. Diverse o-ring seals between actuator, adapter and positioner.
- It is recommended that spare seals and bearings are kept by the user. Complete seal kits for the valve service are available (see spare parts lists).
- If damaged seals are replaced, generally all seals and bearings should be changed.
- Dismantling and installation of seals according to Service Instructions.
- All seals must be slightly greased before their installation. Grease SV seal according to fig. - especially the cross bores.
- The inner parts of the actuator are maintenance free.

**Attention!** Use food-grade special grease being suited for the respective seal material, only.

### Recommendation:

APV-food-grade grease for **EPDM, FPM, HNBR and NBR**

(0,75 kg /can - ref. No. 000 70-01-019/93)

(60 g /tube - ref. No. 000 70-01-018/93)

or

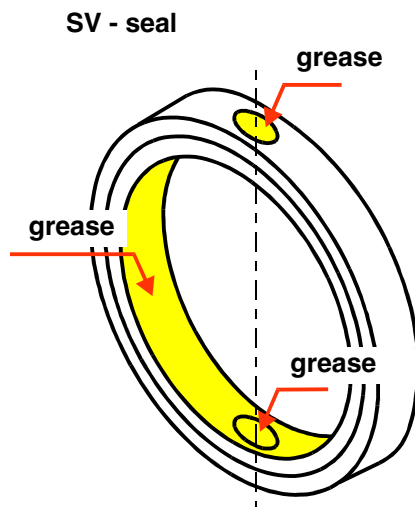
APV-food-grade grease for **VMQ**

(0,6 kg /can - ref. No. 000 70-01-017/93)

(60 g /tube - ref. No. 000 70-01-016/93)

!!! Do not use grease containing mineral oil for EPDM seals !!!

!!! Do not use Silicone-based grease for VMQ seals !!!

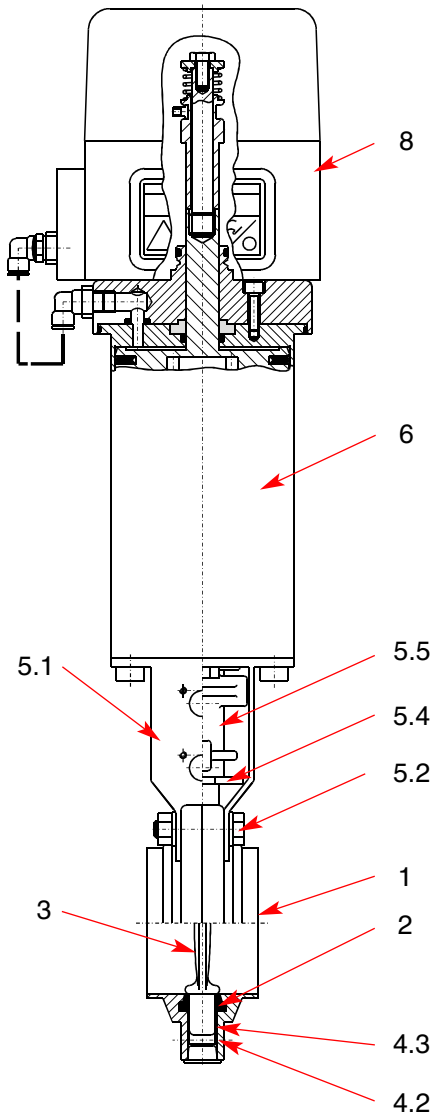


## 10. Service Instructions

### 10.1 Disassembly from the line system



DELTA SV1B  
with positioner TC 8630



#### Danger !

- a. Shut off connecting lines, let down line pressure and drain pipeline.
- b. Disconnect electric and pneumatic connections.
- c. Release additional separate connection in the pipeline.
- d. Remove fastening screw (5.2) at the yoke (5.1).
- e. Release fastening screws (4.2) at the circumferences of the housing halves (1).
- f. Extract the housing halves.
- g. Dismantle the butterfly valve.
- h. Remove valve disc (3) with SV seal (2) and bearing bushes (4.3) from the housing halves.

**Attention!** Disassembly is only possible in closed valve position.

#### 10.1.1 Disassembly of the valve SV1B

The item numbers refer to the spare parts drawings.

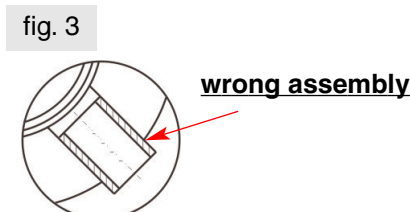
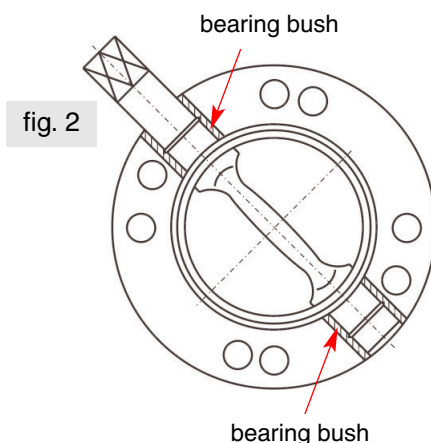
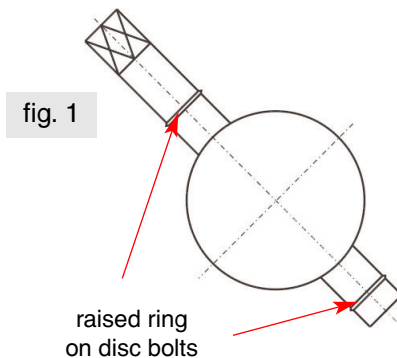
RN 01.037.553      DN – design  
RN 01-037.553-1      Inch – design

- **Turning actuator with positioner TC 8630**  
The positioner needs not be dismantled from the actuator.
- Detach actuator (6) with yoke and positioner (8) to the top.
- Detach coupling piece (5.5) and positioner (5.4) also to the top.
- Extract the housing halves.

## 10. Service Instructions

### 10.1.2 Replacement of seals

- Turn valve disc (1) in the SV seal (2) in open position.
- Remove the bearing bushes (4.3).
- By slight pressing, the SV seal (2) is deformed in its longitudinal axis so that it can be pulled off via the short bearing spindle.
- Pull the SV seal (2) off the actuating spindle.
- Clean the valve disc (1).
- Grease the cross bores of the new seal ring according to chapter 9 and insert the long actuating spindle of the valve disc (1).
- Turn the disc (4) in the SV seal (2) into open position.
- With slight hand pressure, the seal ring is deformed in its longitudinal axis so that it can be pushed on via the short bearing spindle.



### 10.1.3 Installation of inner parts

The valve disc (3) is equipped with a raised ring on the disc bolt (fig. 1).

- Place the bearing bushes (4.3) on the spindle of the disc. The bearing bushes must be flush with the housing flange (fig. 2).
- Insert valve disc (3) in open position, with SV seal (2) and bearing bushes (4.3) into one housing half (1).
- Assemble the housing halves (1), tighten with screws (4.2 and 5.2) alternately crosswise. During the installation of the housing halves, the raised ring presses into the plastic surface of the bearing bush and secures the bearing bush against longitudinal motion.

**Attention!** During tightening of the screws (5.2 and 4.2) the valve disc (3) must be in **open** position. Damage to the valve disc seal is possible in case of assembly in **closed** position. The bearing bushes must not protrude from the housing flanges (fig. 3).

### 10.1.4 Assembly of the valve

- Proceed in reverse order to the steps described in chapters 10.1 and 10.1.1.

## 11. Service Instructions

### 11.1 Disassembly from the line system

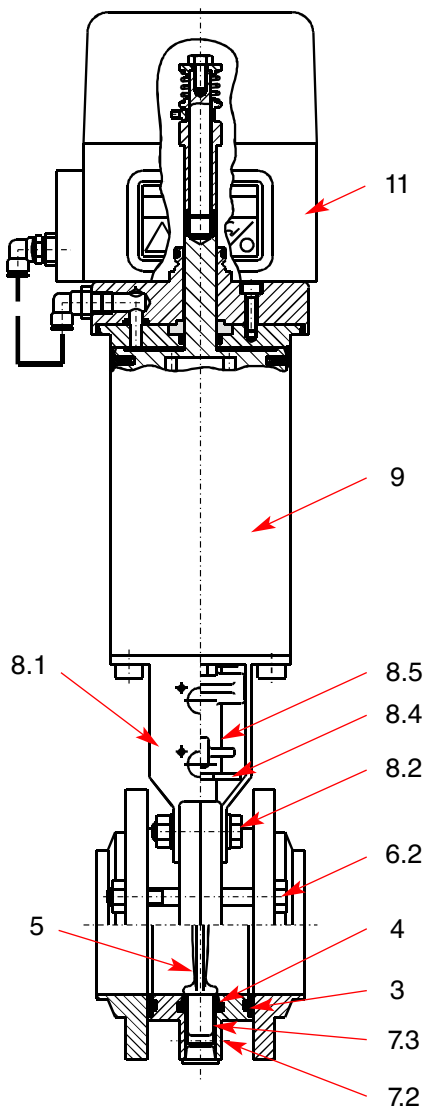


#### DANGER!

- a. Shut off connecting lines, let down line pressure and drain pipeline.
- b. Disconnect electric and pneumatic connections.
- c. Remove hexagon screws (6.2).
- d. Take butterfly valve out from between the flanges (2).

**Attention!** Disassembly is only possible in closed valve position.

DELTA SVS1FB  
with positioner TC 8630



#### 11.1.1 Disassembly of the valve SVS1FB

The item numbers refer to the spare parts drawings.

RN 01.037.554      DN – design  
RN 01-037.554-1      Inch – design

- **Turning actuator with positioner TC 8630**  
The positioner needs not be dismantled from the actuator.
- Remove fastening screws (8.2) at the yoke (8.1).
- Detach actuator (9) with yoke and positioner (11) to the top.
- Detach couling piece (8.5) and positioner (8.4) also to the top.
- Release fastening screws (7.2) at the circumferences of the housing halves (1).
- Extract the housing halves.
- Remove valve disc (5) with SV seal (4) and bearing bushes (7.3) from the housing halves.
- Dismantle FGN1 seals (3).

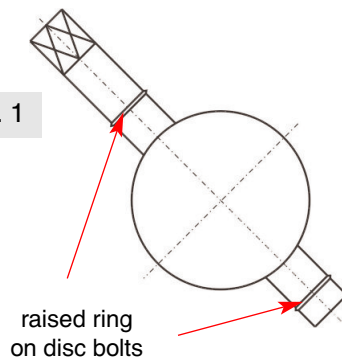


## 11. Service Instructions

### 11.1.2 Replacement of seals

- Take FGN1 flange seals (3) out of the groove and replace them.
- Turn valve disc (5) in the SV seal (4) in open position.
- Remove the bearing bushes (7.3).
- By slight pressing, the SV seal (4) is deformed in its longitudinal axis so that it can be pulled off via the short bearing spindle.
- Pull the SV seal (4) off the actuating spindle.
- Clean the valve disc (5).
- Grease the cross bores of the new seal ring according to chapter 9 and insert the long actuating spindle of the valve disc (5).
- Turn the valve disc (5) in the SV seal (4) into open position.
- With slight hand pressure, the seal ring is deformed in its longitudinal axis so that it can be pushed on via the short bearing spindle.

fig. 1

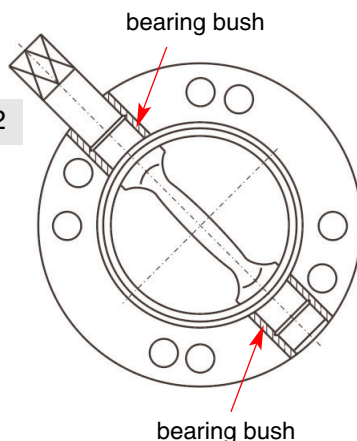


### 11.1.3 Installation of inner parts

The valve disc (5) is equipped with a raised ring on the disc bolt (fig. 1).

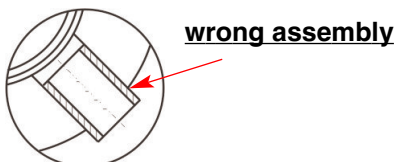
- Place the bearing bushes (7.3) on the spindle of the disc. The bearing bushes must be flush with the housing half (fig. 2).
- Insert valve disc (5) in open position, with SV seal (4) and bearing bushes (7.3) into one housing half (1).
- Assemble the housing halves (1), tighten with screws (7.2 and 8.2) alternately crosswise. During the installation of the housing halves, the raised ring presses into the plastic surface of the bearing bush and secures the bearing bush against longitudinal motion.

fig. 2



**Attention!** During tightening of the screws (7.2 and 8.2) the valve disc (3) must be in **open** position. Damage to the valve disc seal is possible in case of assembly in **closed** position. The bearing bushes must not protrude from the housing flanges (fig. 3).

fig. 3



### 11.1.4 Assembly of the valve

- Proceed in reverse order to the steps described in chapters 11.1 and 11.1.1.

## 12. Spare Parts Lists

---

The reference numbers of the spare parts for the different valve designs and sizes are included in the attached spare parts drawings with corresponding lists.

Please indicate the following data to place an order for spare parts:

- number of required parts
- reference number
- designation.

subject to change



BA SVS1FBSV 02  
ID-No.: H 3 2 1 1 5 0  
Translation of original manual



rev. 0



Your local contact:



APV  
Zeichenstraße 49  
D-59425 Unna

Phone: +49(0) 23 03/ 108-0 Fax: +49(0) 23 03 / 108-210

For more information about our worldwide locations, approvals, certifications, and local representatives, please visit [www.apv.com](http://www.apv.com).

Copyright © 2008 SPX Corporation

The information contained in this document, including any specifications and other product details, are subject to change without notice. While we have taken care to ensure the information is accurate at the time of going to press, we assume no responsibility for errors or omissions nor for any damages resulting from the use of the information contained herein.



Weitergabe sowie Vervielfältigung dieser Unterlage, Verwertung und Mitteilung ihres Inhalts ist gestattet, soweit nicht schriftlich zugestanden, Verstoß verpflichtet zum Schadensersatz und kann strafrechtliche Folgen haben (Paragraf 18 UWG, Paragraf 106 Urtg.). Eigentum und alle Rechte, auch für Patenterteilung und Gebrauchsmustererteilung, vorbehalten. APV Rosista GmbH. Diese Zeichnung wurde mit CAD erstellt und darf nicht von Hand geändert werden.

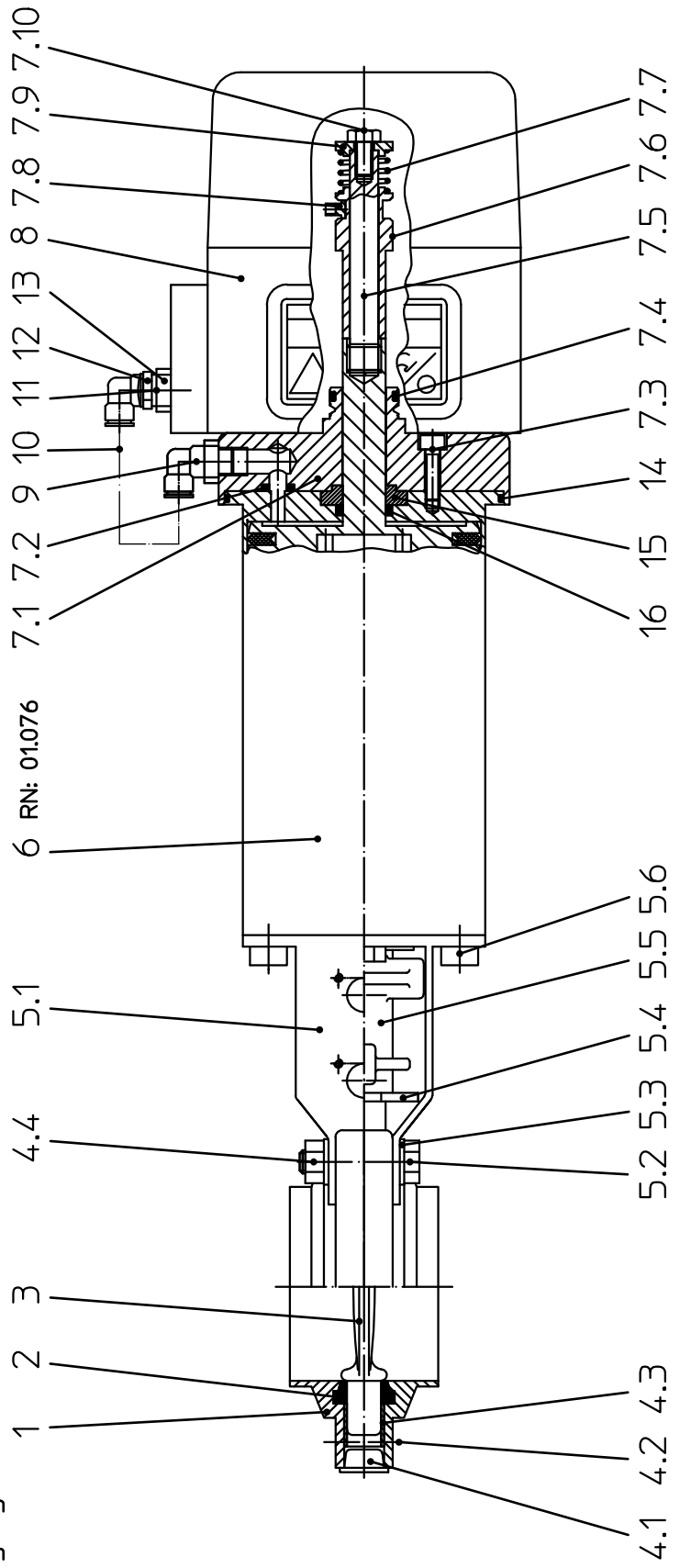
Ersatzteilliste: spare parts list:		Besteht aus 4 Blatt Blatt 1		Name	
Scheibenventil SV1B- FZ-F0 mit elektro-pneum.		Gezeichnet 14.12.06		Trytko	
Stellungsregler TC 8630 (Bürkert) DN25-100		Geprüft			
Butterfly valve SV1B- NC-NO with electro-pneumatic		Normgepr.			
positionier IC 8630 (Bürkert) DN25-100		Datum 12/06			
		Name Trytko			
				RN 01.037.553	



Es stehen verschiedene Dichtungswerkstoffe zur Verfügung. Bitte WS-Nr. ergänzen

The following seal materials are available (fill in last two digits of ref.-no.)

- \* Dichtungswerkstoff: material seals:
- ../13-VMQ
  - ../33-HNBR
  - ../73-FPM
  - ../93-EPDM



Es stehen verschiedene Dichtungswerkstoffe zur Verfügung. Bitte WS-Nr. ergänzen









Weitergabe sowie Vervielfältigung dieser Unterlage, Verwertung und Mitteilung ihres Inhalts ist ohne schriftliche Genehmigung der APV Rosista GmbH untersagt. Die APV Rosista GmbH ist für die Richtigkeit der Angaben nicht haftbar. Die APV Rosista GmbH ist für die Richtigkeit der Angaben nicht haftbar. Die APV Rosista GmbH ist für die Richtigkeit der Angaben nicht haftbar.

Ersatzteilliste: spare parts list:		Blatt <u>3</u>	
Scheibenventil SV1B- FZ-F0 mit elektro-pneum.		Gezeichnet 14.12.06	
Stellungsregler TC 8630 (Bürkert) DN25-100		Geprüft	
Butterfly valve SV1B- NC-NO with electro-pneumatic		Normgepr.	
positionier TC 8630 (Bürkert) DN25-100		Name Trytko	
Datei 12/06		Datei 14.12.06	
Name Trytko		Name Trytko	
RN 01.037.553		RN 01.037.553	



APV Rosista GmbH  
D-58425 Urra  
Germany

Pos. / Item	Benennung / description	25	40	50	65	80	100	125	150	
		WS-Nr. ref.-no.	WS-Nr. ref.-no.	WS-Nr. ref.-no.	WS-Nr. ref.-no.	WS-Nr. ref.-no.	WS-Nr. ref.-no.	WS-Nr. ref.-no.	WS-Nr. ref.-no.	
7.4 1	O-Ring OR- 19,2x3	58-06-073/83	=	=	=	=	=	=	=	
7.5 1	Verlängerung Extension piece	08-52-331/42	=	=	=	=	=	=	=	
7.6 1	Schaltnocke Operating cam	08-52-333/42	=	=	=	=	=	=	=	
7.7 1	Feder Spring	60-07-002/13	=	=	=	=	=	=	=	
7.8 1	Mirnehmer Engaging piece	08-44-050/93	=	=	=	=	=	=	=	
7.9 1	Druckstück Trust ring	08-48-216/42	=	=	=	=	=	=	=	
7.10 1	Skt. Schraube Hex. screw	DIN EN 24017-M6x12-A2-70								
8 1	Stellungsregler TC 8630 (Bürkert) Positioner TC 8630 (Bürkert)	29-03-060/93	=	=	=	=	=	=	=	
9 3	W-Verschraubung schwenkbar G1/8" 6x1 W-Union stowable	08-60-750/93	=	=	=	=	=	=	=	
10 1	Luftschlauch 6x1 (øAxl 6x4) Air hose	08-75-020/53	=	=	=	=	=	=	=	
11 2	Reduziernippel G1/4" G1/8" Reduce nipple	09-14-040/93	=	=	=	=	=	=	=	
12 1	Schalldämpfer Sound reducer	08-60-751/93	=	=	=	=	=	=	=	
13 1	Entlüftungsstopfen G1/8" Venting plug	08-60-005/93	=	=	=	=	=	=	=	
14 1	O-Ring OR- 90x2	58-06-426/83	=	=	=	=	=	=	=	
15 1	Druckstück Drehantrieb K080 Trust ring turning actuator K080	08-48-117/53	=	=	=	=	=	=	=	
16 1	O-Ring OR- 15,3x2,4	58-06-052/83	=	=	=	=	=	=	=	







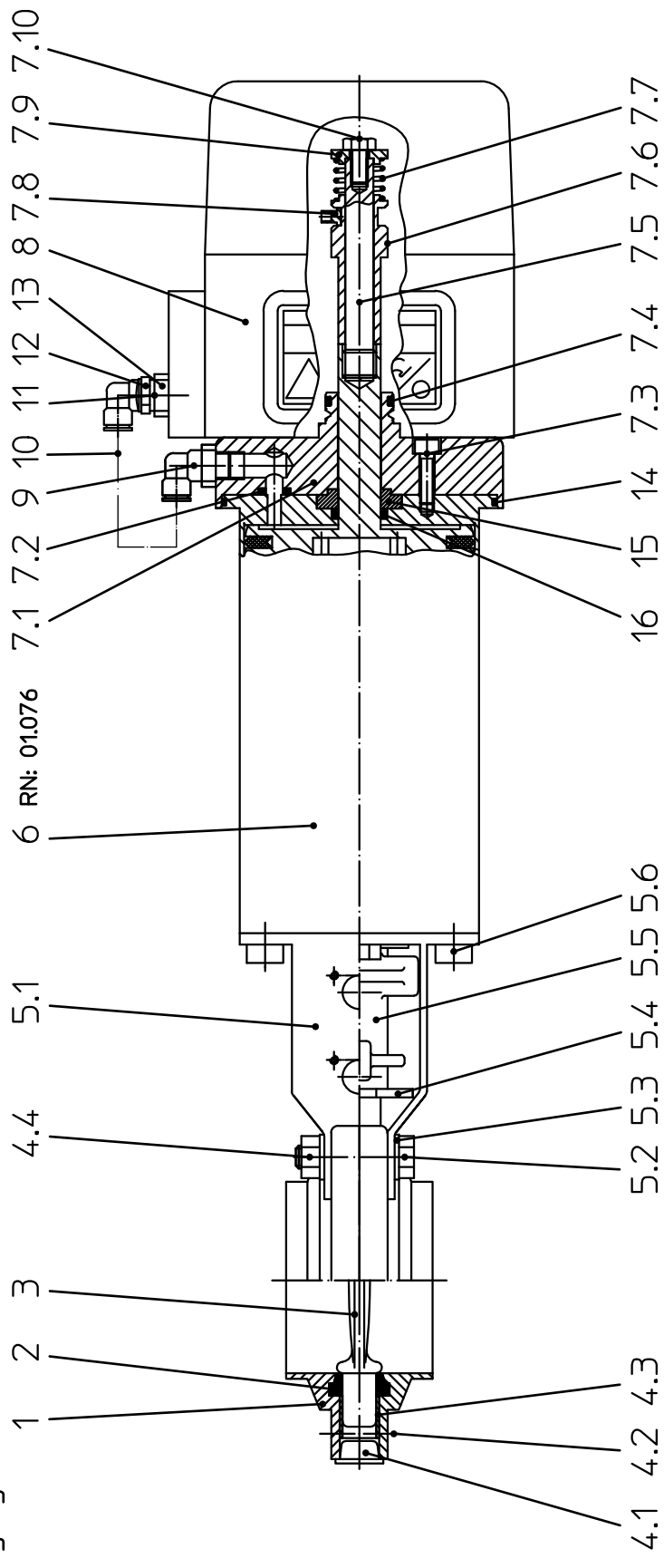
Weitergabe sowie Vervielfältigung dieser Unterlage, Verwertung und Mitteilung ihres Inhalts nicht gestattet, soweit nicht schriftlich zugestanden. Verstöß verpflichtet zum Schadensersatz und kann strafrechtliche Folgen haben (Paragraf 18 UWG, Paragraf 106 Urtg.). Eigentum und alle Rechte, auch für Patenterteilung und Gebrauchsmustererteilung, vorbehalten. APV Rosista GmbH. Diese Zeichnung wurde mit CAD erstellt und darf nicht von Hand geändert werden.

Ersatzteilliste: spare parts list: Scheibenventil SV1B- FZ-F0 mit elektro-pneum. Stellungsregler TC 8630 (Bürkert) 1-4 Zoll Butterfly valve SV1B- NC-NO with electro-pneumatic positioner TC 8630 (Bürkert) 1-4 inch		Besteht aus 4 Blatt Blatt 1		Gezeichnet 04.01.07 Geprüft Normgepr.		Datum 01/07 Name Trytko		Name Trytko	
								APV Rosista GmbH D-59425 Ustro Germany	
								RN 01.037.553-1	

Es stehen verschiedene Dichtungswerkstoffe zur Verfügung. Bitte WS-Nr. ergänzen

The following seal materials are available (fill in last two digits of ref.-no.)

- \* Dichtungswerkstoff: material seals:
- ../13-VMQ
  - ../33-HNBR
  - ../73-FPM
  - ../93-EPDM





Weitergabe sowie Vervielfältigung dieser Unterlage, Verwertung und Mitteilung ihres Inhalts ist gestattet, soweit nicht schriftlich zugestanden. Verstößt verpflichtet zum Schadensersatz und kann strafrechtliche Folgen haben (Paragraf 18 UWG, Paragraf 106 UrhG). Eigentum und alle Rechte, auch für Patenterteilung und Gebrauchsmusteranmeldung, vorbehalten. APV Rosista GmbH. Diese Zeichnung wurde mit CAD erstellt und darf nicht von Hand geändert werden.

Ersatzteilliste: spare parts list:  
 Scheibenventil SV1B- FZ-F0 mit elektro-pneum.  
 Stellungsregler TC 8630 (Bürkert) 1-4 Zoll  
 Butterfly valve SV1B- NC-NO with electro-pneumatic  
 positioner TC 8630 (Bürkert) 1-4 inch

Blatt 2

Gezeichnet	04.01.07	Name	Trytko
Geprüft			
Normgepr.			
Datum	01/07	Name	Trytko

RN 01.037.553-1



APV Rosista GmbH  
 D-58425 Urrna  
 Germany

Pos. item	Benennung description	1"		1,5"		2"		2,5"		3"		4"	
		WS-Nr. ref.-no.	WS-Nr. ref.-no.	WS-Nr. ref.-no.	WS-Nr. ref.-no.	WS-Nr. ref.-no.	WS-Nr. ref.-no.	WS-Nr. ref.-no.	WS-Nr. ref.-no.	WS-Nr. ref.-no.	WS-Nr. ref.-no.	WS-Nr. ref.-no.	WS-Nr. ref.-no.
1	Gehäuse-Hälfte Housing half	09-93-319/42	09-93-419/42	09-93-419/42	09-93-469/42	09-93-519/42	09-93-519/42	09-93-519/42	09-93-519/42	09-93-552/42	09-93-669/42		WS-Nr. ref.-no.
2	Dichtung SV Seal SV	58-33-325/	58-33-425/	58-33-425/	58-33-475/	58-33-525/	58-33-525/	58-33-525/	58-33-525/	58-33-503/	58-33-675/		WS-Nr. ref.-no.
3	Klappe Disc	08-55-318/63	08-55-418/63	08-55-418/63	08-55-468/63	08-55-518/63	08-55-518/63	08-55-518/63	08-55-518/63	08-55-527/63	08-55-668/63		WS-Nr. ref.-no.
4	Montagesatz Assembly kit	26-95-061/12	=	=	=	=	=	=	=	26-95-062/12	26-95-064/12		WS-Nr. ref.-no.
4.1	Verschlusstopfen SV Lock plug SV	08-74-010/93	=	=	=	=	=	=	=				WS-Nr. ref.-no.
4.2	Skt. Schraube Hex. screw	2x DIN EN 24017-M8x28-A2-70	2x =	2x =	2x =	2x =	2x =	2x =	2x =	4x =	4x =		WS-Nr. ref.-no.
4.3	Lagerbuchse Bearing	08-01-150/93	=	=	=	=	=	=	=	=	08-01-151/93		WS-Nr. ref.-no.
4.4	Skt. Mutter Hex. nut	4x DIN EN 24032-M8-A2	4x =	4x =	4x =	4x =	4x =	4x =	4x =	6x =	6x =		WS-Nr. ref.-no.
5	Laternen SV mit Anbauteilen Yoke SV with add-on piece	15-40-053/17	15-40-055/17	15-40-055/17	15-40-055/17	15-40-054/17	15-40-054/17	15-40-054/17	15-40-054/17	=	=		WS-Nr. ref.-no.
5.1	Laternen Yoke	15-40-030/17	15-40-816/17	15-40-816/17	15-40-816/17	15-40-025/17	15-40-025/17	15-40-025/17	15-40-025/17	=	=		WS-Nr. ref.-no.
5.2	Skt. Schraube Hex. screw	DIN EN 24017-M8x35-A2-70	DIN EN 24017-M8x35-A2-70	DIN EN 24017-M8x35-A2-70	DIN EN 24017-M8x35-A2-70	DIN EN 24017-M8x35-A2-70	DIN EN 24017-M8x35-A2-70	DIN EN 24017-M8x35-A2-70	DIN EN 24017-M8x35-A2-70				WS-Nr. ref.-no.
5.3	Scheibe Washer	DIN 125 A8,4	DIN 125 A8,4	DIN 125 A8,4	DIN 125 A8,4	DIN 125 A8,4	DIN 125 A8,4	DIN 125 A8,4	DIN 125 A8,4				WS-Nr. ref.-no.
5.4	Zeiger Position indicator	08-29-021/93	=	=	=	=	=	=	=	=	=		WS-Nr. ref.-no.
5.5	Kupplungsstück Coupling	08-52-050/13	=	=	=	=	=	=	=	=	=		WS-Nr. ref.-no.
5.6	Skt. Schraube Hex. screw	DIN EN 24017-M8x12-A2-70	DIN EN 24017-M8x12-A2-70	DIN EN 24017-M8x12-A2-70	DIN EN 24017-M8x12-A2-70	DIN EN 24017-M8x12-A2-70	DIN EN 24017-M8x12-A2-70	DIN EN 24017-M8x12-A2-70	DIN EN 24017-M8x12-A2-70				WS-Nr. ref.-no.
6	Drehantrieb F/L für RME Actuator spring/air for control unit	15-37-070/17	=	=	=	=	=	=	=	=	=		WS-Nr. ref.-no.
7	Anbausatz für Stellungsregler Add-on kit for positioner	08-48-148/93	=	=	=	=	=	=	=	=	=		WS-Nr. ref.-no.
7.1	Adapter Adapter	08-48-149/93	=	=	=	=	=	=	=	=	=		WS-Nr. ref.-no.
7.2	O-Ring O-ring	58-06-016/64	=	=	=	=	=	=	=	=	=		WS-Nr. ref.-no.
7.3	Zyl. Schraube m. Innensechskant Cap. screw with inner hexagon	DIN EN ISO 4762-M5x18-A2-70	DIN EN ISO 4762-M5x18-A2-70	DIN EN ISO 4762-M5x18-A2-70	DIN EN ISO 4762-M5x18-A2-70	DIN EN ISO 4762-M5x18-A2-70	DIN EN ISO 4762-M5x18-A2-70	DIN EN ISO 4762-M5x18-A2-70	DIN EN ISO 4762-M5x18-A2-70				WS-Nr. ref.-no.













Weitergabe sowie Vervielfältigung dieser Unterlage, Verwertung und Mitteilung ihres Inhalts nicht gestattet, soweit nicht schriftlich zugestanden. Verstöß verpflichtet zum Schadensersatz und kann strafrechtliche Folgen haben (Paragraf 18 UWG, Paragraf 106 Urtg.). Eigentum und alle Rechte, auch für Patenterteilung und Gebrauchsmustererteilung, vorbehalten. APV Rosista GmbH. Diese Zeichnung wurde mit CAD erstellt und darf nicht von Hand geändert werden.

Ersatzteilliste; spare parts list:  
 Scheibenventil SVS1FB- FZ-FO mit elektro-pneum.  
 Stellungsregler TC 8630 (Bürkert) DN25-100  
 Butterfly valve SVS1FB- NC-NO with electro-pneumatic  
 positioner TC 8630 (Bürkert) DN25-100

Besteht aus 4 Blatt		Blatt 1	
Gezeichnet	05.01.07	Datum	01/07
Geprüft		Name	Trytko
Normgepr.			
		Name	
		Trytko	
		RN 01.037.554	

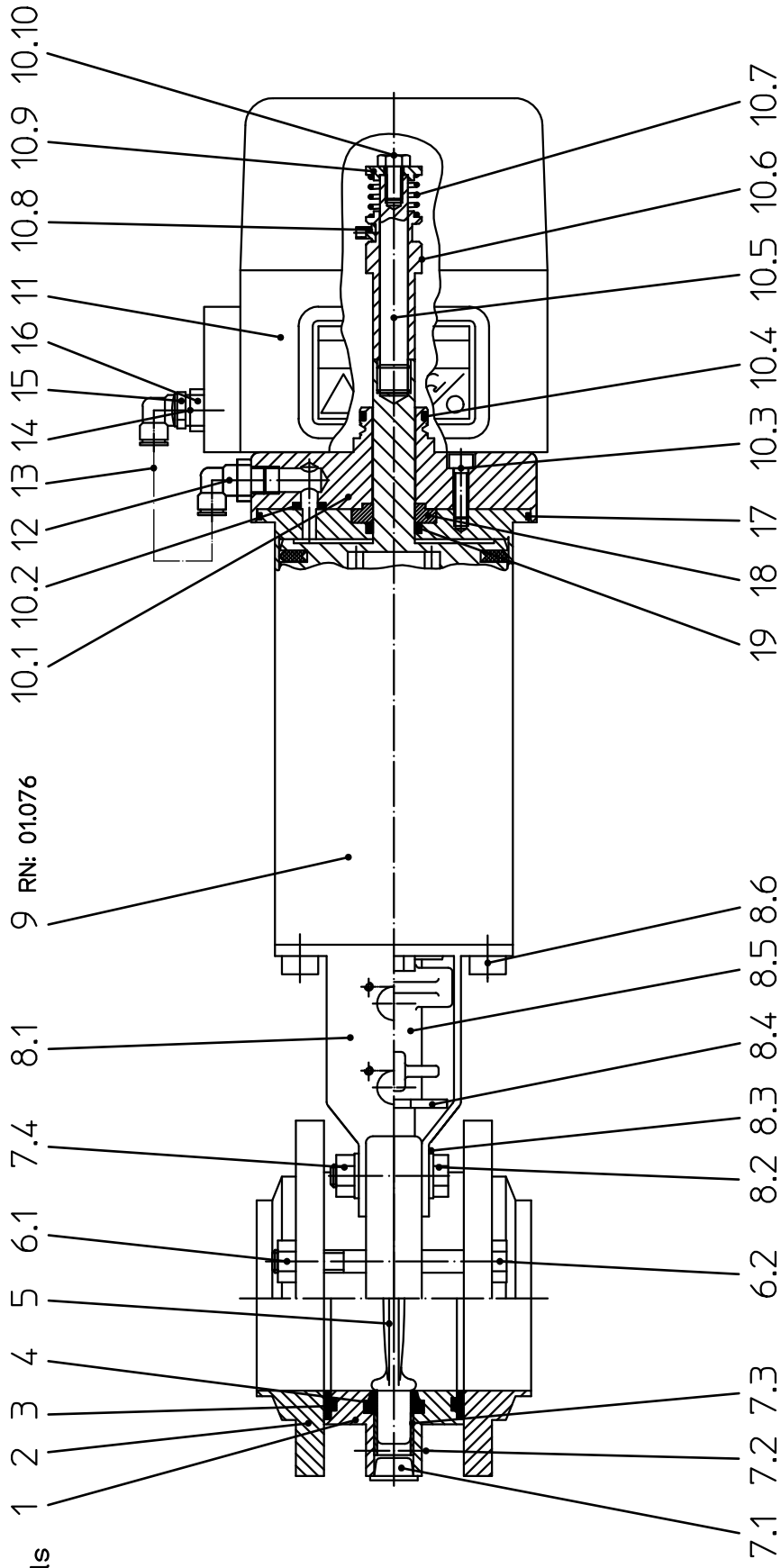
Es stehen verschiedene  
 Dichtungswerkstoffe zur Verfügung.  
 Bitte WS-Nr. ergänzen

The following seal materials  
 are available (fill in last  
 two digits of ref.-no.)

\* Dichtungswerkstoff:

material seals:

- ../13-VMQ
- ../33-HNBR
- ../73-FPM
- ../93-EPDM





Weitergabe sowie Vervielfältigung dieser Unterlage, Verwertung und Mitteilung ihres Inhalts ist untersagt, soweit nicht schriftlich zugestanden, Verstoß verpflichtet zum Schadensersatz und kann strafrechtliche Folgen haben (Paragraf 18 UWG, Paragraf 106 UWG). Eigentum und alle Rechte, auch für Patenterteilung und Gebrauchsmustererteilung, vorbehalten. APV Rosista GmbH. Diese Zeichnung wurde mit CAD erstellt und darf nicht von Hand geändert werden.

Ersatzteilliste; spare parts list:  
 Scheibenventil SVS1FB- FZ-F0 mit elektro-pneum. Stellungsgler TC 8630 (Bürkert) DN25-100 Butterfly valve SVS1FB- NC-NO with electro-pneumatic positioner TC 8630 (Bürkert) DN25-100

Blatt 2

Gezeichnet	05.01.07	Name	Trytko
Geprüft			
Normgepr.			

Datum: 01/07, Name: Trytko

RN 01.037.554



APV Rosista GmbH  
 D-58425 Urra  
 Germany

Pos. item	Benennung description	DN				WS-Nr. ref.-no.	WS-Nr. ref.-no.	WS-Nr. ref.-no.	WS-Nr. ref.-no.	WS-Nr. ref.-no.
		25	40	50	65					
1	Gehäuse-Hälfte Housing half	WS-Nr. ref.-no.	WS-Nr. ref.-no.	WS-Nr. ref.-no.	WS-Nr. ref.-no.	WS-Nr. ref.-no.	WS-Nr. ref.-no.	WS-Nr. ref.-no.	WS-Nr. ref.-no.	
2	Flansch FG1 Flange FG1	09-94-284/42	09-94-384/42	09-94-434/42	09-94-484/42	09-94-534/42	09-94-634/42			
3	Dichtung FGN1 Seal FGN1	09-51-277/42	09-51-377/42	09-51-427/42	09-51-477/42	09-51-527/42	09-51-627/42			
4	Dichtung SV Seal SV	58-32-277/	58-32-377/	58-32-427/	58-32-477/	58-32-527/	58-32-627/			
5	Klappe Disc	58-33-278/	58-33-378/	58-33-428/	58-33-478/	58-33-528/	58-33-628/			
6	Schraubenpaket für Flansche Screw packet for flange	08-55-276/63	08-55-376/63	08-55-426/63	08-55-476/63	08-55-526/63	08-55-626/63			
6.1	Skt. Mutter Hex. nut	26-95-010/00	26-95-011/00	=	=	26-95-012/00	=			
6.2	Skt. Schraube Hex. screw	DIN EN 24032-M8-A2	DIN EN 24032-M8-A2	4x	4x	6x	6x			
7	Montagesatz Assembly kit	DIN EN 24017-M8x80-A2-70	DIN EN 24017-M8x80-A2-70	4x	4x	6x	6x			
7.1	Verschlusstopfen SV Lock plug SV	26-95-061/12	=	=	=	26-95-063/12	26-95-064/12			
7.2	Skt. Schraube Hex. screw	08-74-010/93	=	=	=					
7.3	Lagerbuchse Bearing	DIN EN 24017-M8x28-A2-70	DIN EN 24017-M8x28-A2-70	2x	2x	4x	4x			
7.4	Skt. Mutter Hex. nut	08-01-150/93	=	=	=	=	08-01-151/93			
8	Laterne SV mit Anbauteilen Yoke SV with add-on piece	DIN EN 24032-M8-A2	DIN EN 24032-M8-A2	4x	4x	6x	6x			
8.1	Laterne Yoke	15-40-053/17	15-40-055/17	=	15-40-054/17	=	=			
8.2	Skt. Schraube Hex. screw	15-40-030/17	15-40-816/17	=	15-40-025/17	=	=			
8.3	Scheibe Washer	DIN EN 24017-M8x35-A2-70	DIN EN 24017-M8x35-A2-70							
8.4	Zeiger Position indicator	DIN 125 A8.4	DIN 125 A8.4							
8.5	Kupplungsstück Coupling	08-29-021/93	=	=	=	=	=			
8.6	Skt. Schraube Hex. screw	08-52-050/13	=	=	=	=	=			
		DIN EN 24017-M8x12-A2-70	DIN EN 24017-M8x12-A2-70							













Weitergabe sowie Vervielfältigung dieser Unterlage, Verwertung und Mitteilung ihres Inhalts nicht gestattet, soweit nicht schriftlich zugestanden. Verstöß verpflichtet zum Schadensersatz und kann strafrechtliche Folgen haben (Paragraf 18 UWG, Paragraf 106 Urtg.). Eigentum und alle Rechte, auch für Patentierung und Gebrauchsmusteranmeldung, vorbehalten. APV Rosista GmbH. Diese Zeichnung wurde mit CAD erstellt und darf nicht von Hand geändert werden.

02/94

Besteht aus <u>4</u> Blatt Blatt <u>1</u>		Gezeichnet	Datum	Name
		Geprüft	15.01.07	Trytko
		Normgepr.		
Datum	01/07			
Name	Trytko			



APV Rosista GmbH  
D-59425 Urra  
Germany

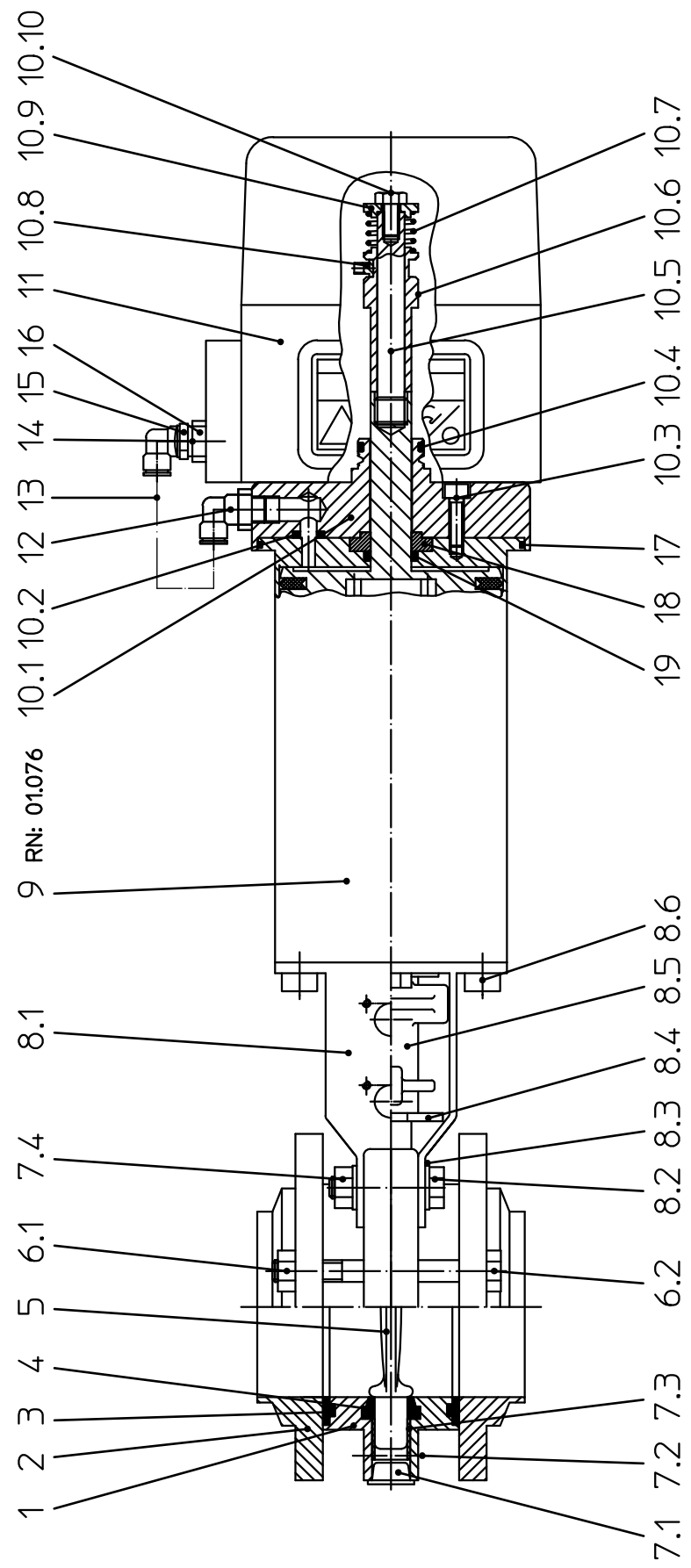
RN 01.037.554-1

Ersatzteilliste; spare parts list:  
Scheibenventil SVS1FB- FZ-FO mit elektro-pneum.  
Stellungsregler TC 8630 (Bürkert) 1-4 Zoll  
Butterfly valve SVS1FB- NC-NO with electro-pneumatic  
positioner TC 8630 (Bürkert) 1-4 inch

Es stehen verschiedene  
Dichtungswerkstoffe zur Verfügung.  
Bitte WS-Nr. ergänzen

The following seal materials  
are available (fill in last  
two digits of ref.-no.)

- \* Dichtungswerkstoff:  
material seals:  
../13-VMQ  
../33-HNBR  
../73-FPM  
../93-EPDM















Weitergabe sowie Vervielfältigung dieser Unterlage, Verwertung und Mitteilung ihres Inhalts nicht gestattet, soweit nicht schriftlich zugestanden. Verstöß verpflichtet zum Schadensersatz und kann strafrechtliche Folgen haben (Paragraf 18 UWG, Paragraf 106 UWG). Eigentum und alle Rechte, auch für Patenterteilung und Gebrauchsmusteranmeldung, vorbehalten. APV Rosista GmbH. Diese Zeichnung wurde mit CAD erstellt und darf nicht von Hand geändert werden.

Ersatzteilliste; spare parts list:  
 Scheibenventil SVS1FB- FZ-FO mit elektro-pneum.  
 Stellungsregler TC 8630 (Bürkert) 1-4 Zoll  
 Butterfly valve SVS1FB- NC-NO with electro-pneumatic  
 positionner TC 8630 (Bürkert) 1-4 inch

Blatt 4

Gezeichnet	15.01.07	Trytko
Geprüft	03.04.07	Knöchel
Normgepr.		
Datum	01/07	07/07
Name	Trytko	Trytko

RN 01.037.554-1



APV Rosista GmbH  
 D-58425 Urra  
 Germany

Pos. item	Benennung description	1"		1,5"		2"		2,5"		3"		4"		WS-Nr. ref.-no.
		WS-Nr. ref.-no.		WS-Nr. ref.-no.		WS-Nr. ref.-no.		WS-Nr. ref.-no.		WS-Nr. ref.-no.		WS-Nr. ref.-no.		
17	O-Ring O-ring	58-06-426/83	=	=	=	=	=	=	=	=	=	=	=	WS-Nr. ref.-no.
18	Druckstück Drehantrieb K80 Trust ring turning actuator K080	08-48-117/53	=	=	=	=	=	=	=	=	=	=	=	WS-Nr. ref.-no.
19	O-Ring O-ring	58-06-052/83	=	=	=	=	=	=	=	=	=	=	=	WS-Nr. ref.-no.

Pos. 3, 4, 7.1, 7.3, 10.2, 10.4, 17, 18, 19 nur im kompletten Dichtungssatz erhältlich  
 item. 3, 4, 7.1, 7.3, 10.2, 10.4, 17, 18, 19 available as complete seal kits only

1	Dichtungssatz Seal kit	FPM	58-36-773/00	58-36-774/00	58-36-775/00	58-36-776/00	58-36-777/00	58-36-778/00						
1	Dichtungssatz Seal kit	EPDM	58-36-773/01	58-36-774/01	58-36-775/01	58-36-776/01	58-36-777/01	58-36-778/01						
1	Dichtungssatz Seal kit	VMQ	58-36-773/02	58-36-774/02	58-36-775/02	58-36-776/02	58-36-777/02	58-36-778/02						
1	Dichtungssatz Seal kit	HNBR	58-36-773/06	58-36-774/06	58-36-775/06	58-36-776/06	58-36-777/06	58-36-778/06						



Weitergabe sowie Vervielfältigung dieser Unterlage, Verwertung und Mitteilung ihres Inhalts nicht gestattet, soweit nicht schriftlich zugestanden. Verstößt verpflichtet zum Schadensersatz und kann strafrechtliche Folgen haben (Paragraf 18 UWG, Paragraf 106 UWG). Eigentum und alle Rechte, auch für Patenterteilung und Gebrauchsmusteranmeldung, vorbehalten. APV Rosista GmbH. Diese Zeichnung wurde mit CAD erstellt und darf nicht von Hand geändert werden.

02/94

Besteht aus 2 Blatt Blatt 1

Gezeichnet	21.06.93	Trytko
Geprüft	25.06.93	Spliehoff
Normgepr.	06.07.93	Plümper

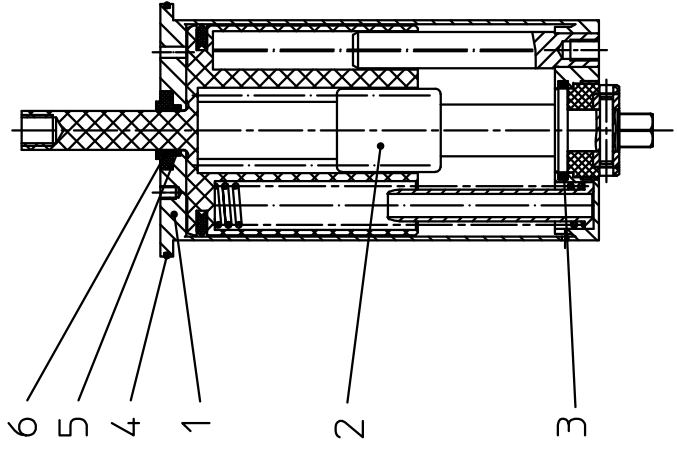
Datum	06/93	10/01
Name	Trytko	Trytko

Ersatzteilliste: spare parts list:  
 Drehantrieb F/L für Rückmeldeeinheit  
 Actuator spring/air prepared for control unit

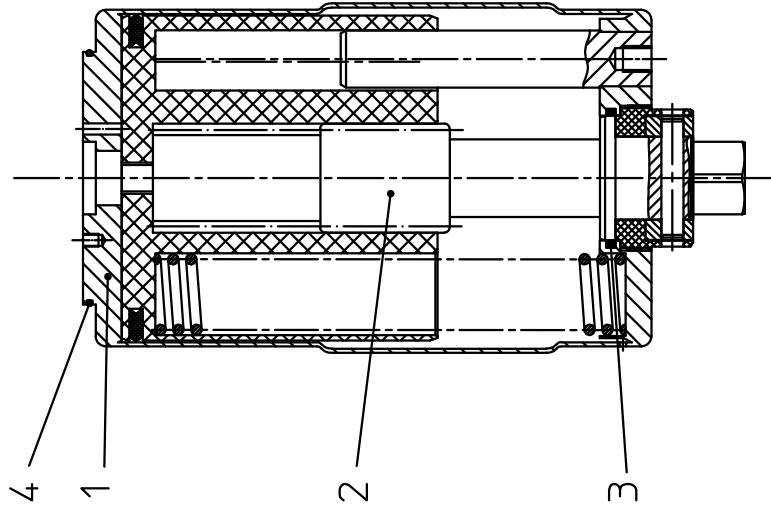
APV Rosista GmbH  
 D-59425 Urra  
 Germany

RN 01.076

DRAT K080-RM



DRAT K125-RM



DRAT K180-RM

